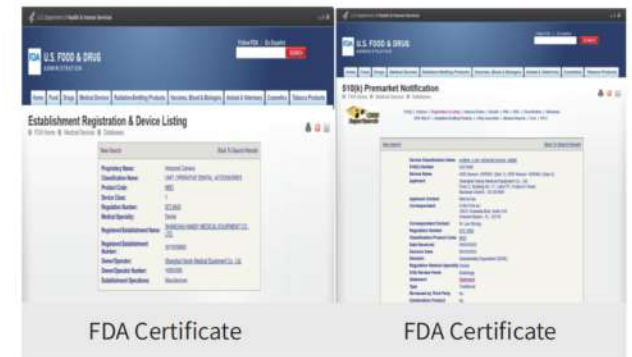




COMPANY INTRODUCTION

Shanghai Handy Medical Equipment Co.,Ltd., established in 2008, is dedicated to becoming the leading global manufacturer of digital imaging products, and providing the global dental market with a full range of intraoral digital product solutions and technical services with CMOS technology as the core. Main products include digital dental X-ray imaging system, digital imaging plate scanner, intraoral camera, high-frequency X-ray unit, etc. Due to excellent product performance, stable product quality and professional technical service, we have won wide praise and trust from global users, and our products have been exported to many countries and regions worldwide.





GOOD SMILE DESIGN

FIBER-OPTICAL SERIES

USB

- > WIDE DYNAMIC RANGE
- > WIDE EXPOSURE RANGE



HDR - 500/600

Digital Dental X-ray Imaging System



F Functional Features

Fiber Optic Plate

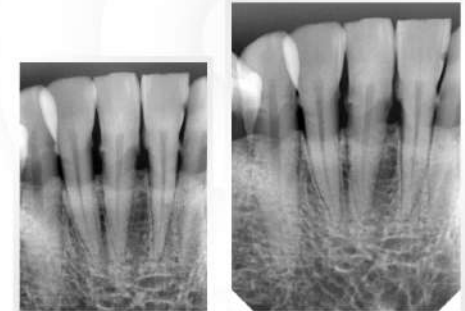
The built-in FOP can take more realistic high-definition images, and even cracked teeth can be easily found.



HDR-500 lower molars HDR-600 lower molars

Wide Exposure Range

Size 1.3 sensor, shooting width 22.5mm



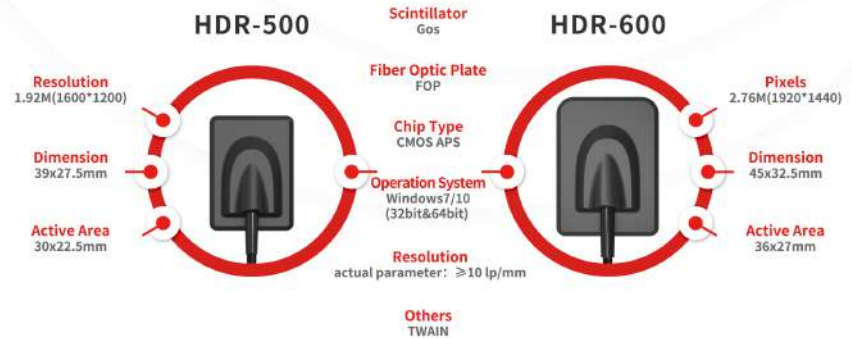
HDR-500 lower front teeth HDR-600 lower front teeth

Wide Dynamic Range

Easy to shoot from low dose to high dose, greatly reducing the requirements for filming experience. Image clarity and sensitivity are significantly improved.

*Pictures from the imaging output

P Product Parameters



Shanghai Handy Medical Equipment Co., Ltd
 Tel: +86 021-36161602 / +86 021-56766108
 ✉ Business Contact: sale@handycreate.com

Website: www.handyimaging.com
 ✉ After Sales Service: support@handycreate.com



GOOD SMILE
DESIGN

FIBER-OPTICAL SERIES

DUSB

> WIDE DYNAMIC RANGE

> WIDE EXPOSURE RANGE



SIZE 1.5



24mm



20mm



20mm

HDR - 380

Digital Dental X-ray Imaging System

F Product Parameters

Fiber Optic Plate

The built-in FOP can take more realistic high-definition images, and even cracked teeth can be easily found.

Wide Exposure Range

Size 1.5 sensor, shooting width 24 mm.

Wide Dynamic Range

Easy to shoot from low dose to high dose, greatly reducing the requirements for filming experience. Image clarity and sensitivity are significantly improved.



HDR-380 lower molars



HDR-380 stomach teeth

*Pictures from the imaging output of isolated teeth

P Product Parameters

HDR-380

Resolution
2.30M(1772*1296)

Dimension
41x29.6mm

Active Area
33x24mm



Scintillator
Csi

Fiber Optic Plate
FOP

Chip Type
CMOS APS

Operation System
Windows7/10(32bit&64bit)

Resolution
actual parameter: ≥14 lp/mm

Others
TWAIN

Shanghai Handy Medical Equipment Co., Ltd
Tel: +86 021-36161602 / +86 021-56766108
✉ Business Contact: sale@handycreate.com

Website: www.handyimaging.com
✉ After Sales Service: support@handycreate.com



Digital Dental X-ray Imaging System

USB

> WIDE DYNAMIC RANGE

> WIDE EXPOSURE RANGE

SIZE
4



VDR 0507-CA1/0507-GA0

Digital Dental X-ray Imaging System

F Functional Features

Fiber Optic Plate

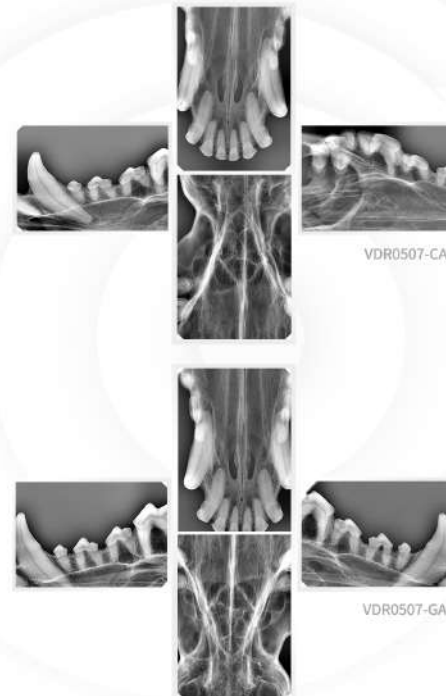
VDR0507-CA1 built-in FOP can take more realistic high-definition images, and even cracked teeth can be easily found.

Wide Exposure Range

Size 4 sensor, shooting area is up to **46.7mm*67.3mm**.

Wide Dynamic Range

Easy to shoot from low dose to high dose, greatly reducing the requirements for filming experience. Image clarity and sensitivity are significantly improved.



VDR0507-CA1

VDR0507-GA0

*Pictures from the imaging output

P Product Parameters

| VDR0507-CA1 | | VDR0507-GA0 | |
|--|---|--|---|
| Resolution 9.19M (2524*3640) | Scintillator VDR0507-CA1: CSI VDR0507-GA0: GOS | Resolution 9.19M (2524*3640) | Scintillator VDR0507-CA1: CSI VDR0507-GA0: GOS |
| Dimension 77.1X53.8mm | Fiber Optic Plate VDR0507-CA1: FOP VDR0507-GA0: None | Dimension 77.1X53.8mm | Fiber Optic Plate VDR0507-CA1: FOP VDR0507-GA0: None |
| Active Area 46.7mmX67.3mm | Chip Type CMOS APS | Active Area 46.7mmX67.3mm | Chip Type CMOS APS |
| High Configuration | Operation System Windows7/10 (32bit&64bit) | Standard Configuration | Operation System Windows7/10 (32bit&64bit) |
| | Resolution actual parameter: ≥14lp/mm (CSI) ≥10lp/mm (GOS) | | Resolution actual parameter: ≥14lp/mm (CSI) ≥10lp/mm (GOS) |
| | Others TWAIN | | Others TWAIN |

Shanghai Handy Medical Equipment Co., Ltd
Tel: +86 021-36161602 / +86 021-56766108
✉ Business Contact: sale@handycreate.com

Website: www.handyimaging.com
✉ After Sales Service: support@handycreate.com



Digital Dental X-ray Imaging System

USB

> WIDE DYNAMIC RANGE

> WIDE EXPOSURE RANGE



VDR 1207-GA0

Digital Dental X-ray Imaging System

F Functional Features

Wide Exposure Range

Size 6 sensor, shooting area is up to 67.5mm*116mm.

Wide Dynamic Range

Easy to shoot from low dose to high dose, greatly reducing the requirements for filming experience. Image clarity and sensitivity are significantly improved.

Wide Application

Able to be used for dogs, cats, rabbits, horses, tortoises, snakes, chinchillas, lizards, birds and other exotic pets...



*Pictures taken inside of Handy Medical

P Product Parameters

VDR1207-GA0

Resolution
22.9M (3646*6268)

Dimension
75.6x143.8mm

Active Area
67.5mmX116mm

Scintillator
GOS

Chip Type
CMOS APS

Operation System
Windows7/10
(32bit&64bit)

Resolution
actual parameter: ≥10lp/mm (GOS)

Others
TWAIN

Shanghai Handy Medical Equipment Co., Ltd
Tel: +86 021-36161602 / +86 021-56766108
✉ Business Contact: sale@handycreate.com

Website: www.handyimaging.com
✉ After Sales Service: support@handycreate.com

INTRAORAL CAMERA

CRACKED TEETH PERFECTLY PRESENTED **HD** **USB**

> LIGHTWEIGHT METAL BODY

> UVC FREE-DRIVER



HDI - 220D

Auto-focus(Fixed) Intraoral Camera

CE **FDA**

F Functional Features

Metal Body

It is made of anodized aluminum, which makes its color not easy to fade and makes it easy to be cleaned.



High Definition

It supports the image quality of 1080P, providing high-definition images.



Image Management

Fast processing, comparison, storage and retrieval make it easy for dentists to create digital cases and complete diagnoses.

*Pictures taken from the tester's teeth

P Product Parameters

| | | | | |
|---------------|-----------|------------------|---------------------------|--|
| Specification | HDI-220D | Lighting | 6 LEDs | |
| Resolution | 1920*1080 | Signal Output | USB2.0 | |
| Focus Range | 5mm~35mm | Operation System | Windows7/10 (32bit&64bit) | |
| Angle of View | ≥60° | Others | Twain | |

Shanghai Handy Medical Equipment Co., Ltd

Tel: +86 021-36161602 / +86 021-56766108

✉ Business Contact: sale@handycreate.com

Website: www.handyimaging.com

✉ After Sales Service: support@handycreate.com



GOOD SMILE DESIGN

INTRAORAL CAMERA

CRACKED TEETH PERFECTLY PRESENTED **1080P FHD USB**

> LARGER VIEW

> INTEGRAL METAL BODY

> UVC FREE-DRIVER



HDI -712D

Adjustable Focus Intraoral Camera



F Functional Features

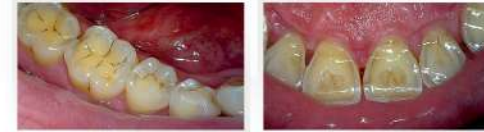
Larger View

It has a larger focus range from 5mm to infinity.



Metal Body

With its CNC carefully carved, it is fashionable, sturdy, durable, resistant to discolouration and easier to clean.



Focus Shooting Integration

The one-finger zoom shooting for both hands makes it faster and more convenient.



*Chinese Utility Model Patent Patent Number: 2018 2 12286036.8

*Pictures taken from the tester's teeth

P Product Parameters

| | | | | |
|---------------|--------------|------------------|---------------------------|--|
| Specification | HDI-712D | Lighting | 6 LEDs | |
| Resolution | 1920*1080 | Signal Output | USB2.0 | |
| Focus Range | 5mm~infinity | Operation System | Windows7/10 (32bit&64bit) | |
| Angle of View | ≥60° | Others | Twain | |

Shanghai Handy Medical Equipment Co., Ltd

Tel: +86 021-36161602 / +86 021-56766108

✉ Business Contact: sale@handycreate.com

Website: www.handyimaging.com

✉ After Sales Service: support@handycreate.com



GOOD SMILE DESIGN

DIGITAL IMAGING PLATE SCANNER

COMPACT SIZE WITH POWERFUL FEATURES

PORTABLE



4 Sizes (0/1/2/3)
Imaging Plates Available

1.5kg Lightweight

Imaging Within 6s

HDS -500

Digital Imaging Plate Scanner



F Functional Features

Mini and Portable

With weight < 1.5kg, it is highly integrated, ultra small and convenient to be moved.

One-Click Imaging

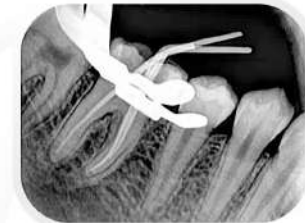
It can output images within 6s, meeting your fast imaging requirement.

Flexible Imaging Plates

It is easier to fit the teeth, and the shooting is more comfortable and accurate.

4 Sizes

It is suitable for size 0/1/2/3 imaging plates to meet different application scenarios.



HDS-500 Size 2 *Pictures from clinic application

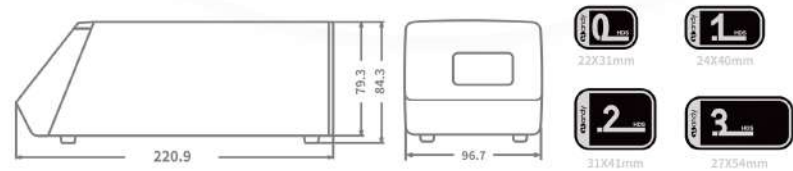


HDS-500 Size 2 *Pictures from clinic application

P Product Parameters

| | | | | | |
|-----------------|--------------|------------------|---------|-------|-----------------------|
| Laser Spot Size | Imaging Time | Laser Wavelength | Weight | ADC | Operating System |
| 35µm | ≤6sec | 660nm | <1.5kgs | 14bit | win7/10 (32bit&64bit) |

S Size Show



Shanghai Handy Medical Equipment Co., Ltd

Tel: +86 021-36161602 / +86 021-56766108

✉ Business Contact: sale@handycreate.com

Website: www.handyimaging.com

✉ After Sales Service: support@handycreate.com



GOOD SMILE
DESIGN

PORTABLE HIGH-FREQUENCY X-RAY UNIT

Easy Operation

Small Size

Fine imaging

Quick Exposure



HDX - 7020

X-ray Machine

P Easy-to Use Multi-functional Interface



P Product Parameters

| | | | |
|---------------------|--------|---------------------------------|-------------|
| Focus | 0.4 mm | Exposure Time Range | 0.04~2 s |
| Tube Current | 2 mA | Anode Angle | 12° |
| Tube Voltage | 70 kV | Battery Capacity | 3000 mAH |
| Power | 140 W | Total filtration lead thickness | 3.8 mm |
| Tube lead thickness | 1 mm | Leakage Radiation | ≤0.25 mGy/h |

Shanghai Handy Medical Equipment Co., Ltd
Tel: +86 021-36161602 / +86 021-56766108
✉ Business Contact: sale@handycreate.com

Website: www.handyimaging.com
✉ After Sales Service: support@handycreate.com



GOOD SMILE
DESIGN

PORTABLE HIGH-FREQUENCY X-RAY UNIT

Easy Operation

Small Size

Fine imaging

Quick Exposure



HDX - 7030

X-ray Machine

P Easy-to Use Multi-functional Interface



P Product Parameters

| | | | |
|---------------------|--------|---------------------------------|-------------|
| Focus | 0.4 mm | Exposure Time Range | 0.04~2 s |
| Tube Current | 3 mA | Anode Angle | 12° |
| Tube Voltage | 70 kV | Battery Capacity | 3000 mAh |
| Power | 210 W | Total filtration lead thickness | 3.8 mm |
| Tube lead thickness | 1 mm | Leakage Radiation | ≤0.25 mGy/h |

Shanghai Handy Medical Equipment Co., Ltd
Tel: +86 021-36161602 / +86 021-56766108
✉ Business Contact: sale@handycreate.com

Website: www.handyimaging.com
✉ After Sales Service: support@handycreate.com

SENSOR HOLDER

- > UNIVERSAL SENSOR COMPATIBILITY
- > ERGONOMIC SENSOR PLACEMENT
- > EASY & ACCURATE POSITIONING



HDT - P01

Sensor Holder

F Functional Features

Universal Sensor Compatibility

The high-elasticity silicone sleeve adapts to sensor sizes 1.3 through 2, providing a secure fit for any clinical requirement.

Ergonomic Sensor Placement

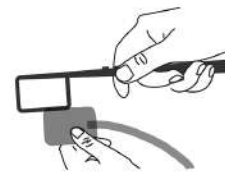
Secure the sensor cable directly into the holder's stem for effortless, steady control. This design eliminates the need for manual finger-holding.

Easy & Accurate Positioning

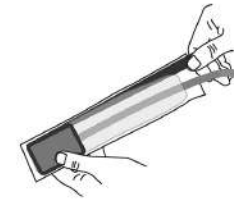
Position the sensor at any angle with ease. Use the detachable wings to align the X-ray tube quickly, reducing retakes and streamlining your workflow.



I Instructions



1. Attach the sensor to the silicone sensor sleeve of the holder.



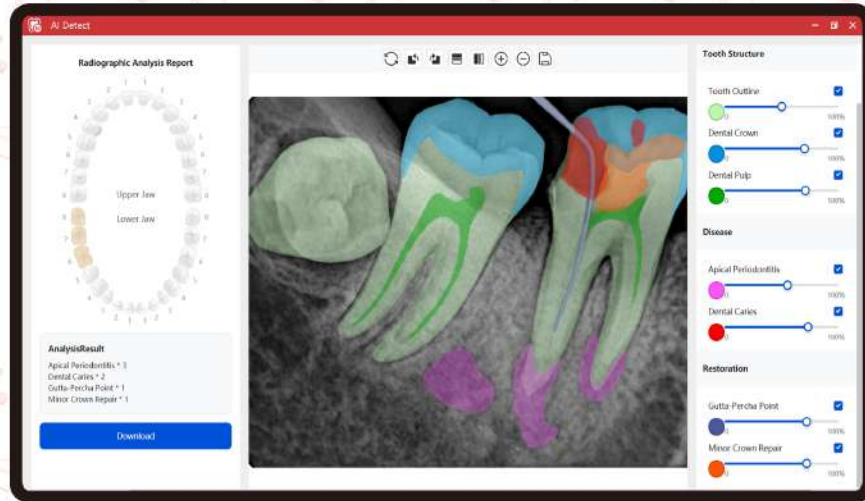
2. Place a disposable sheath over the holder.



3. Install the positioning wing into the groove of the holder. Begin imaging.

Handy AI TEST

Redefines the Experience of
Dentist-Patient Communication



5-Second Smart Analysis



Tiny Details Fully Revealed



Empower Patient Trust



HandyDentist

Imaging Management Software



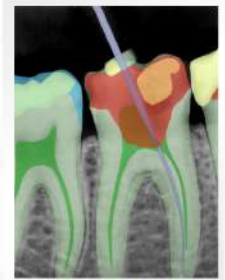
Core Features – Full Detection in 5 Seconds

One click. Color-coded diagnostics, instantly labeled and easy to read.

Disease Detection

Identify Key Pathologies for Clear Visual Communication

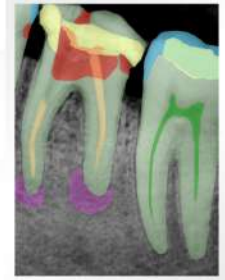
- Apical Periodontitis: Highlight possible inflammation zones.
- Dental Caries: Marks suspected caries areas.



Tooth Structure

Segment Anatomy to Support Clinical Decision-Making

- Tooth Outline: Automatically traces tooth contours.
- Dental Crown: Clearly outlines the crown area.
- Dental Pulp: Indicates pulp location and treatment depth.



Restoration Analysis

Detect Restorative Materials for Informed Treatment Evaluation

- Minor Restoration: Highlights small restoration areas.
- Crown Filling: Identifies crown fillings for easy review.
- Apical Filling: Shows root canal filling conditions.
- Dental Implant: Marks implant position for quick identification.
- Gutta-Percha Point: Detects residual gutta-percha material.



Clinical Applications



Initial
Screening



Periodontal
Management



Root Canal
Evaluation

Continuously trained on clinical data from over **100,000** users worldwide to enhance diagnostic accuracy.

Shanghai Handy Medical Equipment Co., Ltd

Tel: +86 021-36161602 / +86 021-56766108

✉ Business Contact: sale@handycreate.com

Website: www.handyimaging.com

✉ After Sales Service: support@handycreate.com