



Meyer, Reliable Choice

## DENTAL CBCT

Dental Cone-beam Computed Tomography

3D Pro



**MEYER** HEFEI MEYER OPTOELECTRONIC TECHNOLOGY INC.

Add: No. 668 West Wangjiang Rd, High-tech Industry Development Zone,

Hefei, Anhui Province, China

Email: [healthcare@meyerop.com](mailto:healthcare@meyerop.com)

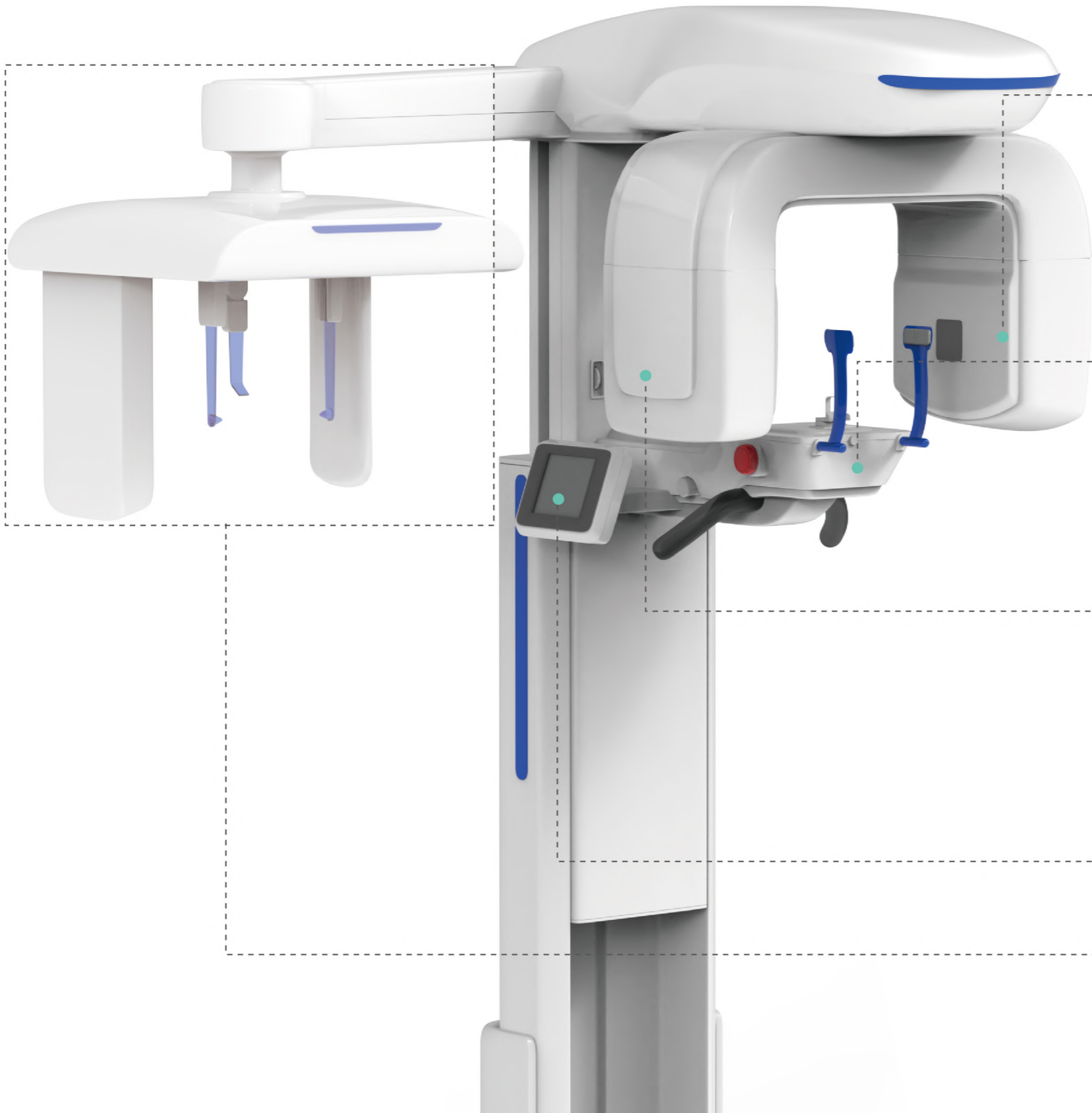
Tel/Fax: 0086-551-65306653

Website: [healthcare.meyerop.com/en](http://healthcare.meyerop.com/en)



# Smart Design and Configurations

Experience Efficiency Precision and Reliability



### Multiple FOVs

to meet all clinical needs



FOV12x10cm



FOV13x10cm



FOV15x10.5cm



FOV16x10cm



### 5-Point Patient Positioning

easy setup with patient scanning countdown to minimise motion artefact

### X-ray Source Cooling System

allows for continuous shooting and undisruptive daily routine



### 360-Degree Scanning

significantly reduces artefact and noise delivering best possible image quality

### Intuitive Touch Screen

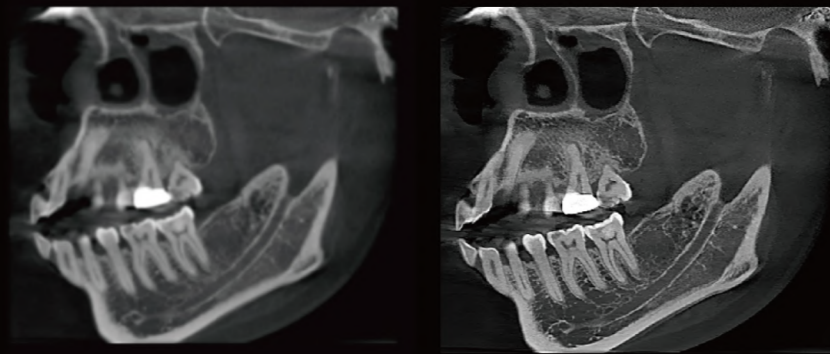
for ease of operation

### Optional Ceph Device

to meet the cephalometric capturing needs

# Powerful CBCT Scan

Experience Future Dentistry



Original image

Meyer ANR

### Meyer ANR

Noise Reduction ▲

- Reducing image noise and distortion.
- Enhancing overall image quality while retaining image details.
- Displaying all details in Endo Mode with improved clarity.



Dynamic demonstration

### Meyer PD

“Pure Detail” - Next-Generation Imaging Technology

- Delivering exceptional image quality whilst retaining true image texture.
- Clear Vision of all details for accurate diagnosis and planning.
- Exceptional image quality with low dose.

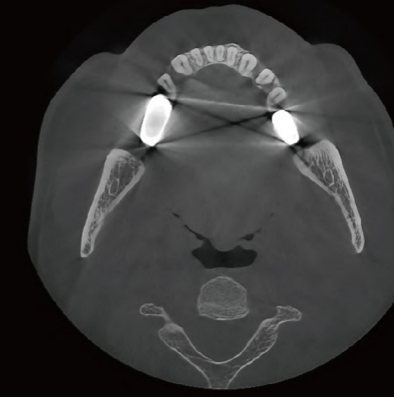


Dynamic demonstration

# AI

## Cutting-Edge Imaging Technology

Intelligent AI Solutions for Superior Image Quality



Original Image

Meyer AAR

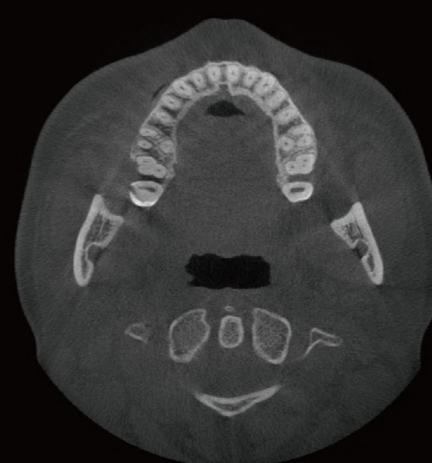
### Meyer PD-MAR

Metal Artefact Reduction ▲

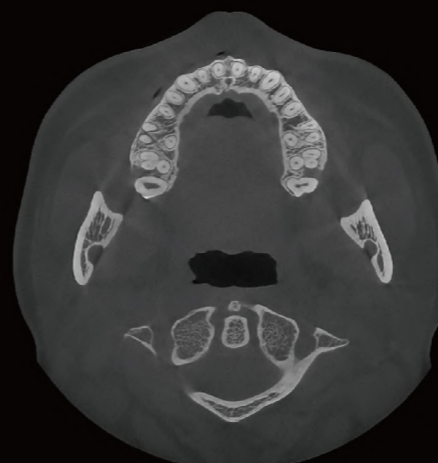
- Significantly reducing artefacts caused by metallic substances, such as implants and metal dental crowns.
- Ensuring image quality and reducing the need for retakes.



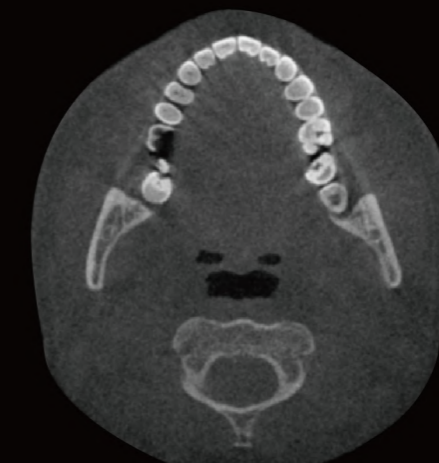
Dynamic demonstration



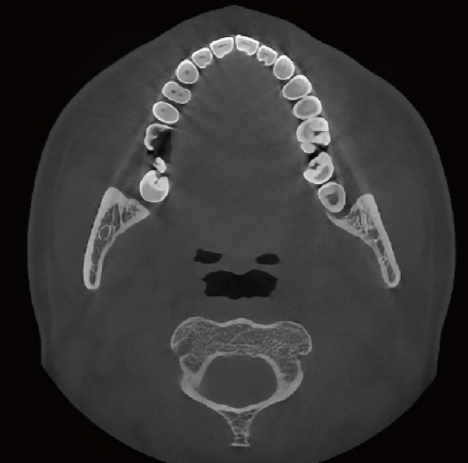
Without PD



With PD



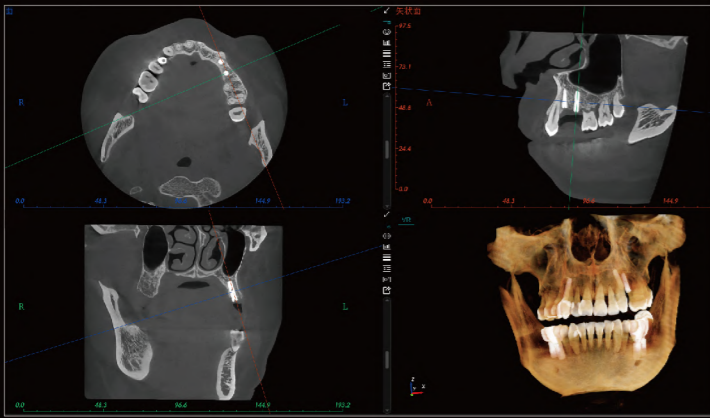
Without PD



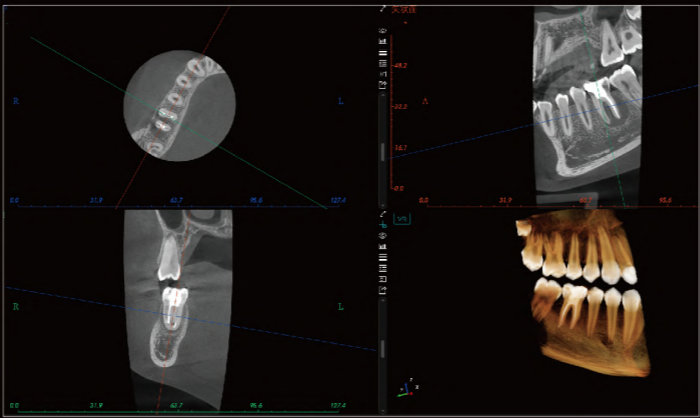
With PD

# Multiple Application Situation

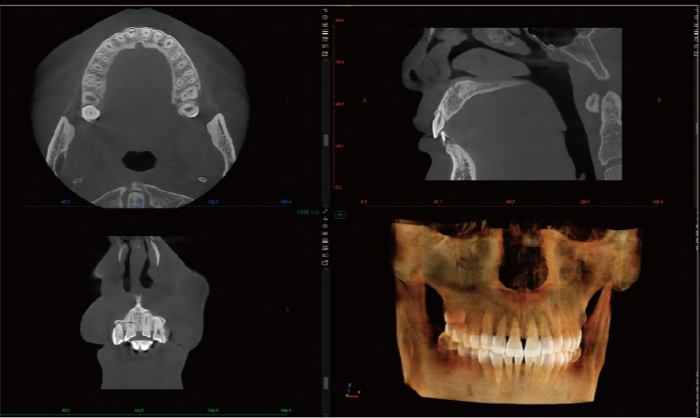
To Meet All Clinical Needs



Multi-Implant



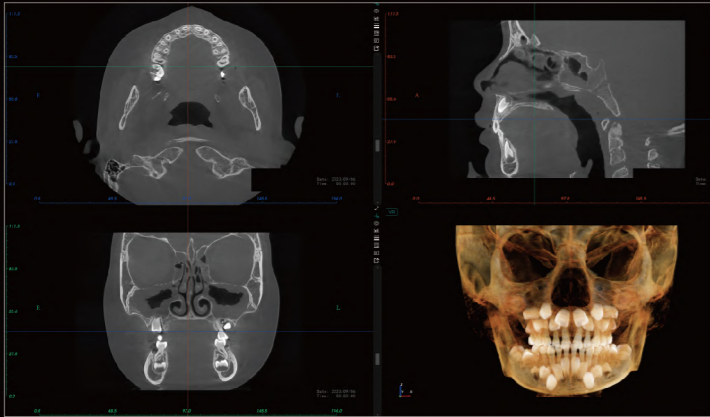
Postoperative pulp cavity morphology



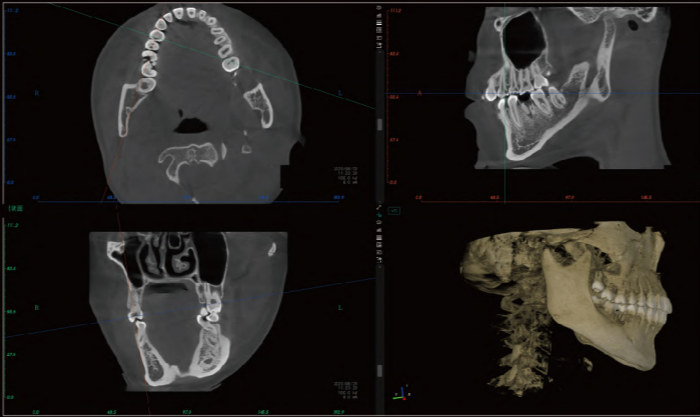
Teeth Fracture



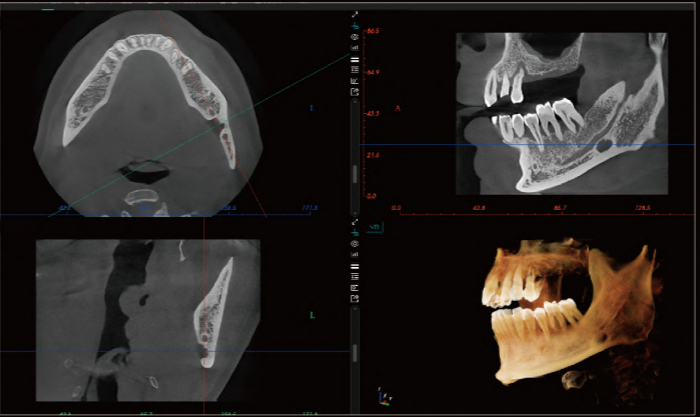
Complex Wisdom Tooth Evaluation



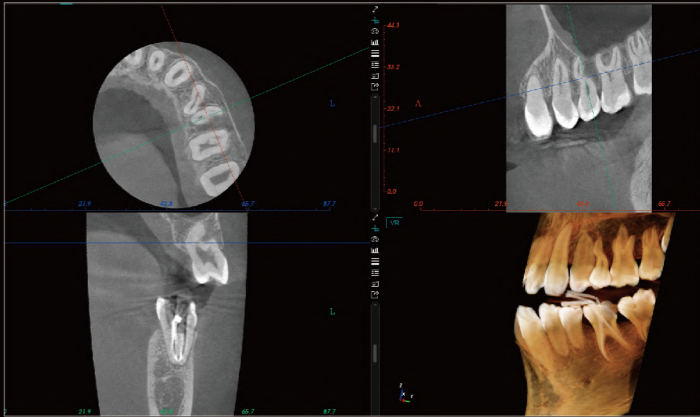
Child's primary dentition stage - mixed dentition stage



Dental caries



Periapical cyst swelling/inflammation (Low-density image)



Dental ectopia, malformation

# AI Multi-layer Panoramic Scan

Intelligent AI Solutions for Superior Image Quality

## Three selectable dental arch forms, tailored to different types of patients

- Each patient has a unique dental arch curve.
- Our machine offers three selectable dental arch forms while also intelligently matching the patient's dental arch form to acquire optimal imaging results.



Narrow

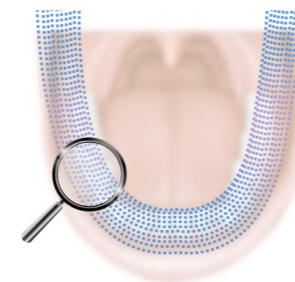


Standard

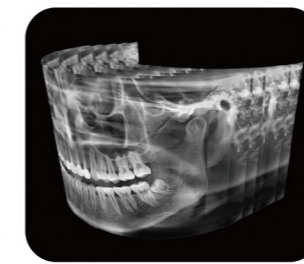


Wide

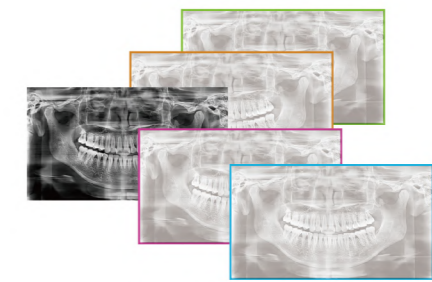
## Multi-layer slices to generate panoramic images



Auto slices count



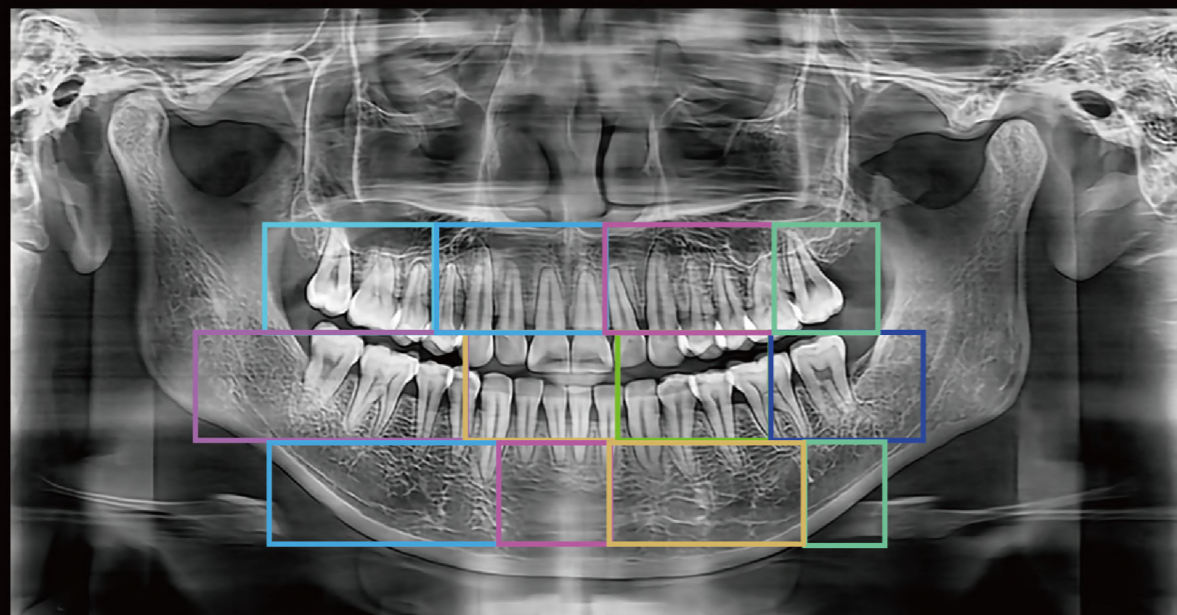
Slices images generation



Auto images selection

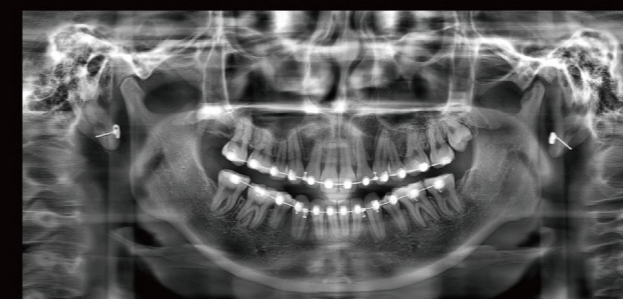
## Auto Focus

Utilizing multi-layer slice imaging, AI automatically selects the optimal region, applies auto focus, and performs image fusion.

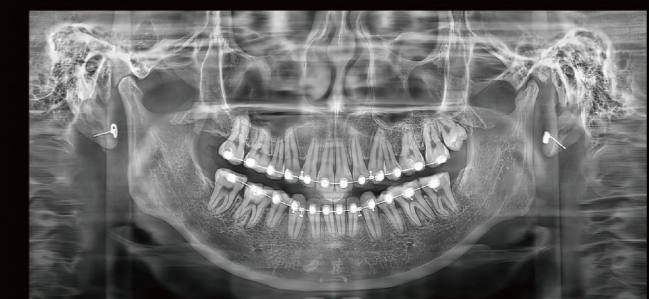


## Image Enhancement

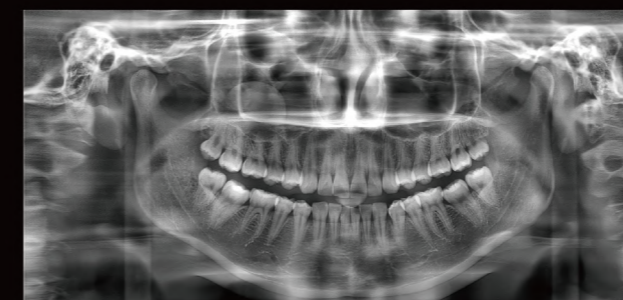
PD" Pure Detail" Panoramic Post-processing Algorithms.



Original image



PD image



Original image



PD image

# MY Ceph & Model Scan

Precision Beyond Imaging

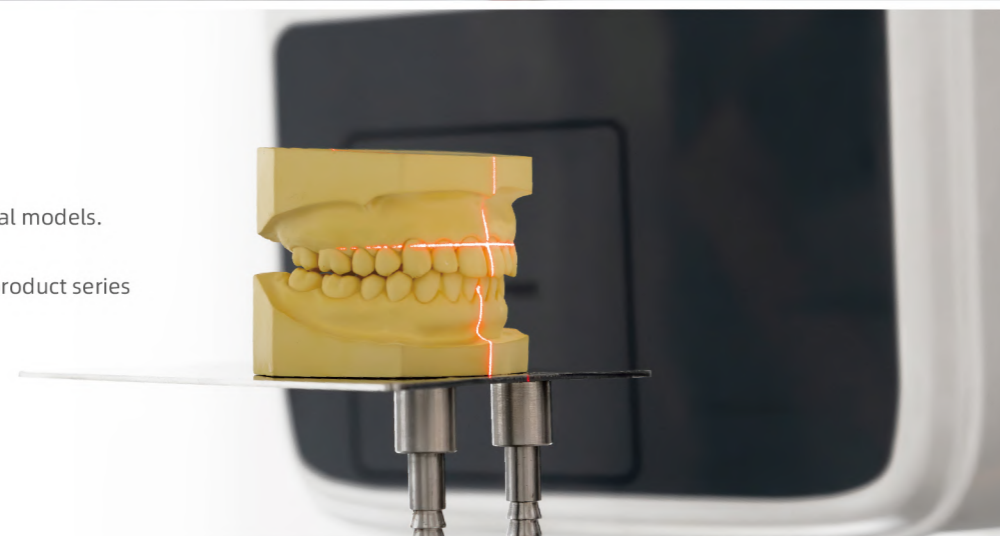
## Ceph Image

- Easy to obtain high grayscale, high-resolution Cephometric images.
- Through dual-level collimation adjustment, a significant reduction in radiation dose has been achieved.
- The high-quality Cephometric images enable precise planning for orthodontics and maxillofacial surgeries.



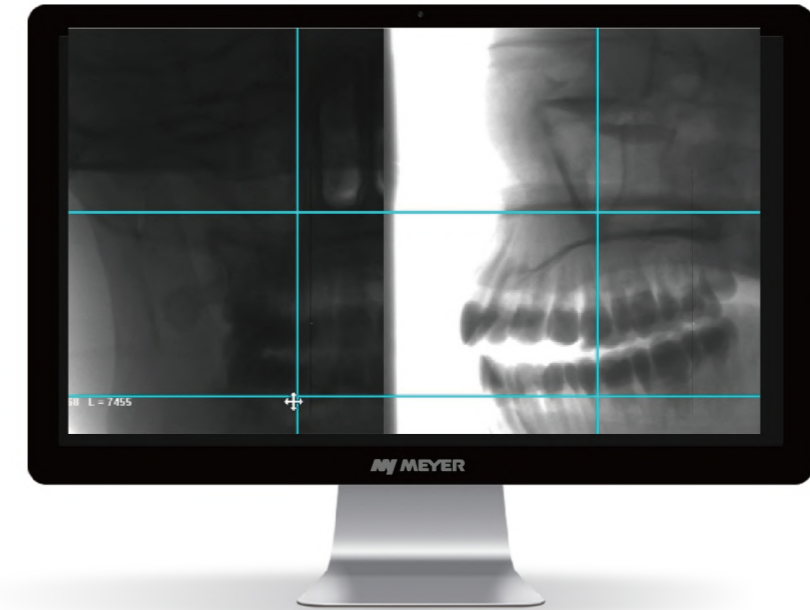
## Model Scan

- Convert plaster or silicone models into digital models. Specialized model tray.
- Model scan function included in the entire product series as standard.



# MY Endo Scan

Unparalleled Image Quality



## Scout View\*

- Pre-exposure helps in selecting the right position, reducing retakes.
- 3-zone selection, free positioning, capture wherever desired.

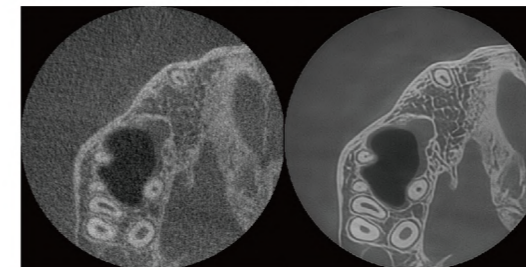
## Endo Mode, HIGH RESOLUTION

- The ideal choice for endodontic treatment.
- Ultra-high resolution imaging for clearer visualization by doctors.

## Endo Image

Intelligent algorithms display more details

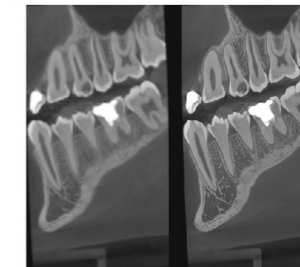
(FOV 3.4x3.4cm, Voxel 70µm)



Original

Endo

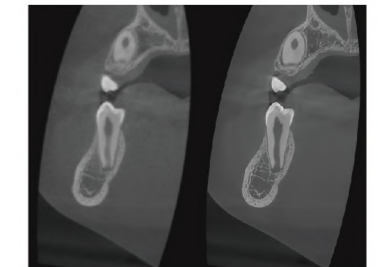
(FOV 5x8cm, Voxel 80µm)



Original

Endo

(FOV 5x8cm, Voxel 80µm)



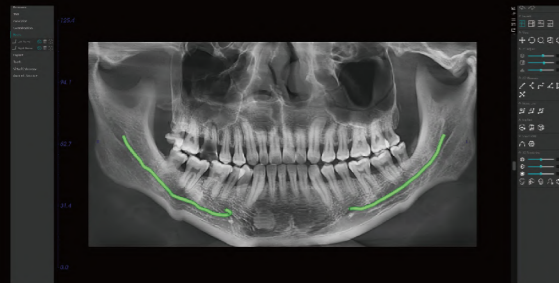
Original

Endo

\* Only available for FOV 12x10cm model

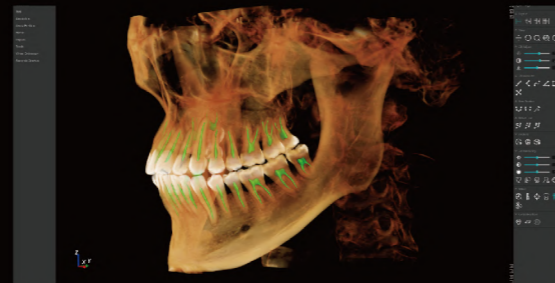
# MyDentViewer

Most Artificially Intelligent 3D Software



## Auto Marks Nerve Tube

Accurate nerve tube annotation in less than 10 seconds, freeing the doctor's hands from complex annotations.



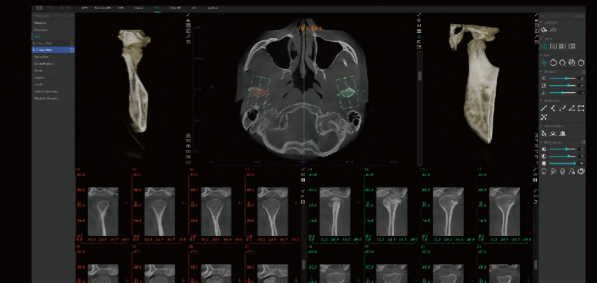
## Auto Marks Root Canals

AI annotates root canals, revealing hidden root canals without any escape.



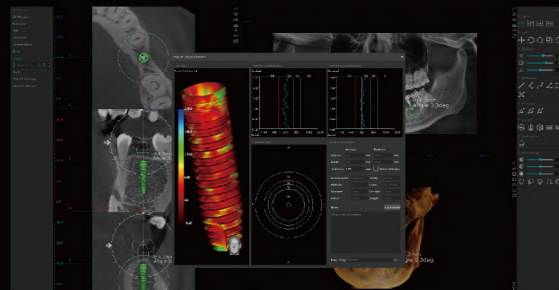
## Auto Ceph Measure Analysis

Multiple methods for measurements, intelligent analysis of patient's ceph images and generate report.



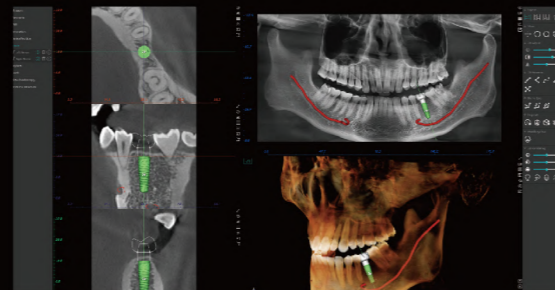
## Auto TMJ Positioning

- The software automatically locates the patient's area, if present.
- Enable 3D visualization for observing the morphology of the TMJ.



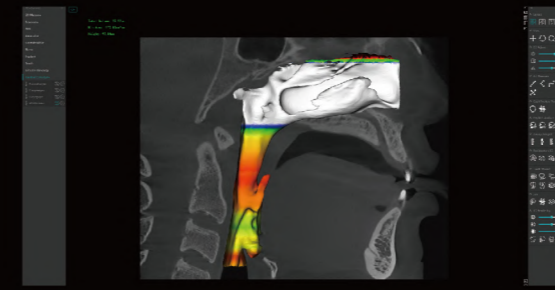
## Auto Bone Density Analysis

One-click assessment of the implant's surrounding environment to evaluate the distribution of bone quality around the implants.



## Implant Simulation

- The software includes an extensive implant library.
- 3D implant simulation with auto bone density analysis and implant collision detection.



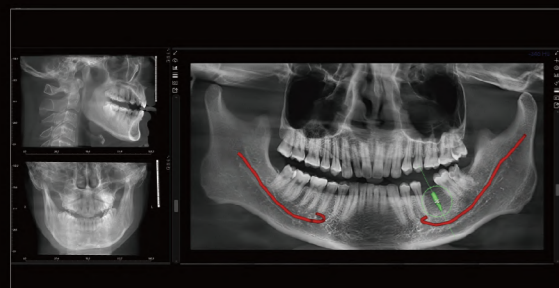
## Auto Airway Analysis

One-click acquisition of airway data, three-dimensional visualization of airway morphology, simplifying the diagnostic process.



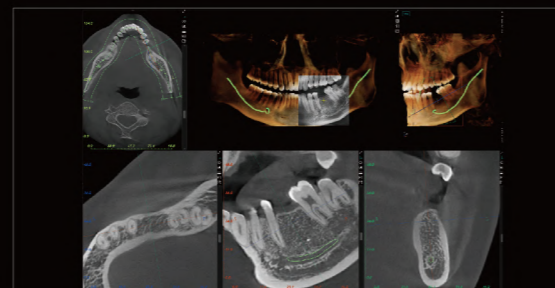
## Auto Tooth Segmentation

- Automatically obtain segmented tooth data for clearer visualization.
- Simulate orthodontic teeth alignment to facilitate doctor-patient communication.



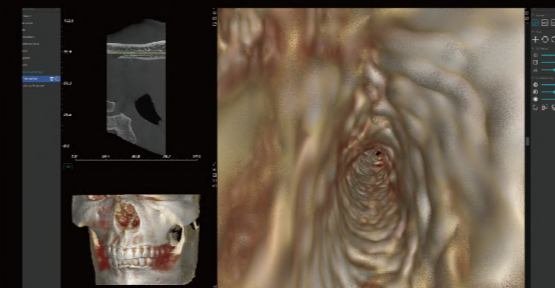
## Auto 2D Reconstruction

- No need for a second exposure.
- Auto reconstructed OPG.
- Auto reconstructed Lateral/Frontal Ceph.



## Quick Positioning in 3D Pano

- Simply drag the VOI box on the 3D panoramic image for quick positioning.
- Immediate 2D sectional views of the VOI box facilitates local diagnosis with an Endo touch.



## Virtual Endoscopy

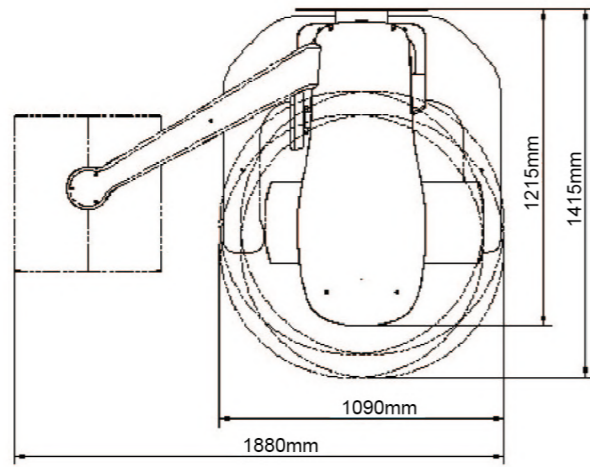
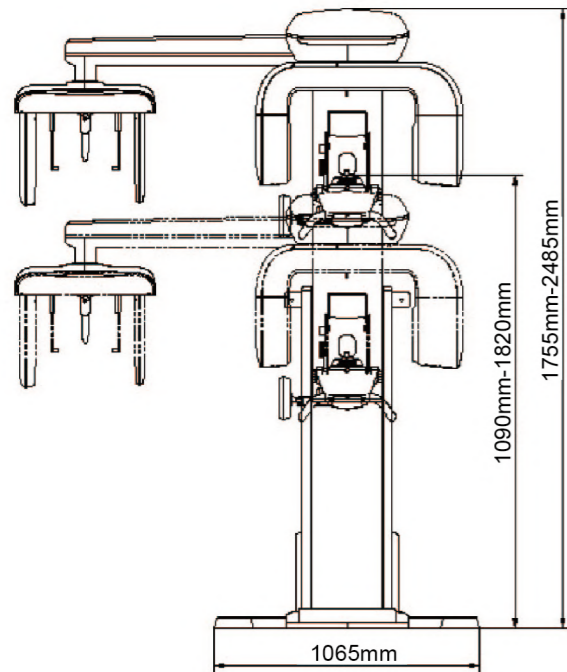
Precision observation of details, reducing clinical diagnosis and treatment risks.



## 3D Registration of Face & Jaw

Face, upper jaw and lower jaw scans of the same patient can be registered by the software to simulate a superimposed model.

# Technical Specifications



Models	Capturing Mode		
	CBCT	Pano	Ceph
SS-X9010DPRO-3DE	√	√	Optional

Models	FOVs	Resolution
SS-X9010DPRO-3DE	12x10cm, 3.4x3.4cm	70 - 420 μm
	13x10cm, 5x8cm	80 - 420 μm
	15x10.5cm, 8x10cm	180 - 420 μm
	16x10cm, 5x8cm	80 - 420 μm

Parameter	All Models
Scan Time (Exposure Time)	CBCT: 20s(8.7s), Pano: 17s Ceph: 12s, Endo: 12s
Reconstruction Time	Less than 60s
Resolution in 3D: Voxel Size	From 70 - 420 μm
Focal Spot	0.5mm(IEC 60336)
Gray Scale	16bit (65536 Gray levels)
X-ray Tube Current	2-10mA(1 mA adjustable)
X-ray Tube Voltage	60-90kV (1 kV adjustable)
Nominal Supply Voltage	200-240V
Input Power Frequency	50Hz/60Hz

Parameter	All Models	
Dimensions	Without Ceph	1065mm(L)x1415mm(W)x2485mm(H)
	With Ceph	1880mm(L)x1415mm(W)x2485mm(H)
Weight	Without Ceph	220 Kg - 485 lbs
	With Ceph	260 Kg - 573 lbs
Operation	Touch-Panel / Remote Control	
Patient Positioning	Standing/seated, chin rest, biteblock ear clips and forehead support	
System Requirement	Windows 10 or Above	
Child Mode	Yes	
Wheelchair Accessible	Yes	

# About Us

## Corporate Overview

Founded in 1993, officially established in 2000, went public on the A-share market in 2012.(stock code 002690)  
We are a national key high-tech enterprise specializing in intelligent identification devices manufacturing.

<b>30</b> Years Company History	<b>100+</b> Countries and Regions	<b>600+</b> Patents	<b>20,000+</b> CBCT Sold
------------------------------------	--------------------------------------	------------------------	-----------------------------

- National Innovative Enterprise
- National Technology Innovation Demonstration Enterprise
- National Intellectual Property Demonstration Enterprise
- Key Software Enterprise within National Planning Layout
- National Torch Program Key High-Tech Enterprise
- National Industrial Brand Cultivation Demonstration Enterprise

## Major Honors

- Twice National Scientific and Technological Progress Second Prize Awards
- Forbes China Top 100 Potential Public Companies
- China's Top 500 Brands
- Top 500 Valuable Listed Companies in China's Manufacturing Industry
- Multiple Awards for National Key New Products
- Top 500 Chinese Machinery Companies
- Top 100 Provincial Inventive Patents
- National Innovation Product Certification
- Top 500 New Economy Enterprises in China
- Top 100 Mainboard Listed Companies by Market
- Value Nationwide
- Top 500 China Innovative Brands

